

Quick Start Guide

Radarcapex

Art. 66006

Art. 66066

Art. 66077



The logo for jetvision, featuring the word 'jetvision' in a bold, italicized sans-serif font. Above the 'i' in 'vision' is a stylized Wi-Fi symbol consisting of three curved lines of increasing size.



Box Contains (Art. 66006):

- Radarcape
- Wall plug power supply
- 5 m network cable
- GPS antenna (cable length 5 m)
- Quick Start Guide



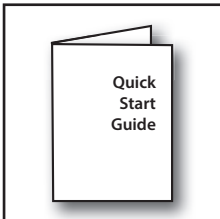
Optional Accessory (Art. 66066):

- „A3 ADS-B“ Antenna
- Antenna cable (cable length 10 m)
- Antenna mount



Optional Accessory (Art. 66077):

- „Active Diapason“ Antenna
- Antenna cable (cable length 20 m)
- Antenna mount
- Bias Tee
- USB power supply cable



Requirements:

- AC power supply 110 V or 230 V
- Internet router providing DHCP and DNS

Visit our Wiki for further information:

http://wiki.modesbeast.com/Radarcape:Installation_Guide

Connections

1. Connect the Mode-S antenna with the antenna cable to the Radarcape, place the antenna as free and as high as possible. **Make sure that the antenna has a conductive connection to ground to avoid damage of Radarcape or Internet router!**
2. Connect the GPS antenna to the Radarcape. Place the GPS antenna to a location with at least half of sky view, e.g. a window sill.
3. Connect the network cable to your Internet router and the Radarcape.
4. Connect the power supply to the Radarcape and your power outlet.

To receive aircraft, you need:

- Antenna (1090 MHz bandwidth)
- Antenna cable

Visit our web-shop:
www.jetvision.de



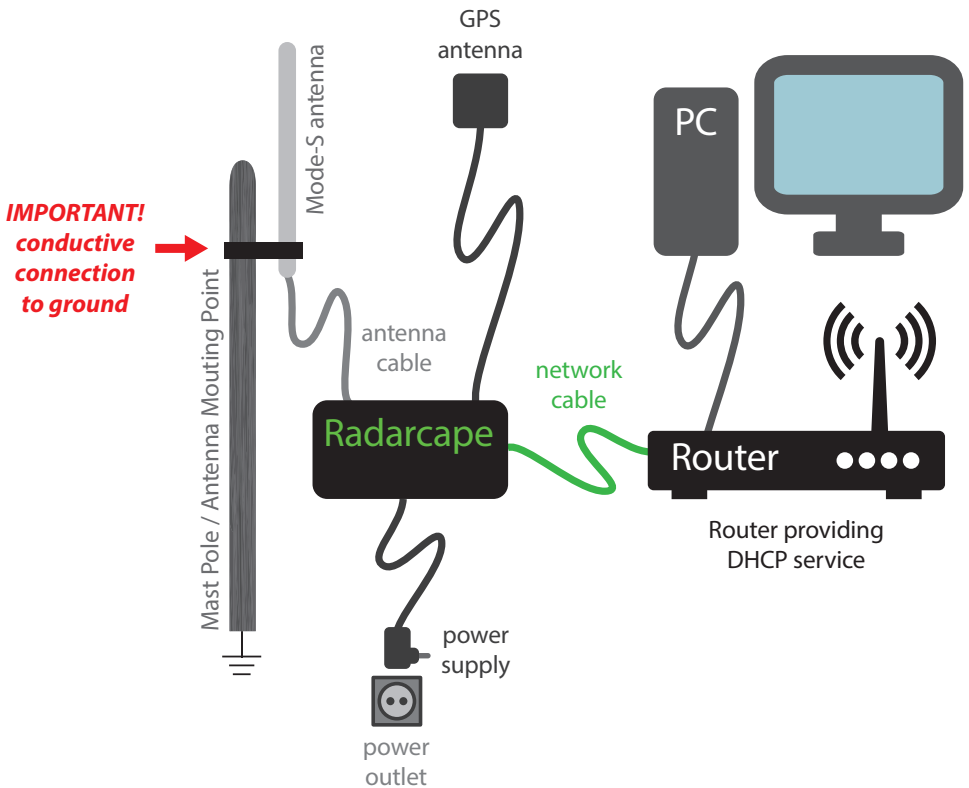
Hardware Installation

Caution:

Static electricity around the antenna can damage your Radarcape or Internet router if there is no ground connection!

Do **NOT** mount the antenna on isolated ground, e.g. wooden stick or plastic or without any connection to ground!

THE ANTENNA MUST BE GROUND!



LED Description

Power LED

The power LED is green when power is applied to the device.

Mode-S LED

The Mode-S LED is flashing on each data frame that has been received from aircraft.

If no frames are received (e.g. no antenna connected), it flashes once per second in order to indicate working state.

GPS LED

The GPS LED is flashing green once each second exactly when the second changes.



4. Go to **Configuration > Software Maintenance** to **check** the flight routes database, basestation database and Open Glider Net database auto update functions.

The screenshot displays two screenshots of the Jetvision Radarcape web interface. The top screenshot shows the 'Aircraft List' page with a dropdown menu open over the 'Settings' button. The 'Software Maintenance' option is highlighted in red. The bottom screenshot shows the 'Software Maintenance' configuration page with three sections highlighted in red: 'Flight Route Database Automatic Update (every 3M)', 'Aircraft Type Database Automatic Update (every 3M)', and 'Open Glider Net Database Automatic Update (every 3M)'. All three sections have a toggle switch set to 'Enabled'.

Registration	Mode-S	Flight	Origin	Destin	Altitude	GS/DIR	Type	Category	Operator	Country	Source	Squawk	Latitude	Longitude	Distance	Signal Level	Last Signal	Trust
ZS-GAZ	008C3	CA8837			-1600	APR	A320	A3	CAI	SAU	ADS-B	1000	30.71802	8.34045	279.8		17:18:45.11918488	11332
SU-TM	D1HCB	REG3071			-896	APR	8738	AC	PSG	Egypt	ADS-B	2030	47.54542	13.10266	171.3	46	17:18:51.87033937	1231
CN-RMU	02044	RAM810	EDDF	QAA	1344	APR	8738	AC	RAM	Monr	ADS-B	2540	48.48378	8.07020	245.9	33	17:18:52.20259546	2154
TS-VR	02A191	LBT3709			1182	APR	A320	AC	LBT	Turk	ADS-B	7121	47.74823	8.11890	251.6		17:18:57.34853843	3658
TS-KDC	02A100	TN6983			64	APR	8738	AC	TAR	Turk	ADS-B	1101	48.60181	12.01202	152.2	71	17:18:52.271602671	2155
AF-8AC	03A02	Q17451			287	31979	473											
AF-8AC	03A02	Q17451			64	APR	877W	AC	QTR	Qatar	ADS-B	3221	30.78260	8.30203	286.4	34	17:18:52.601063000	9196
AF-800	03A03	Q17654	EGSS	OTR	126	41000	544											
AF-ALG	03A07	Q17099	LQWY	OTR	98	39400	332											
AF-40A	03A110				0	APR	A35K	AC	QTR	Qatar	ADS-B	3293	47.29202	12.34814	193.6	48	17:18:52.420112643	2754
AF-AF2	03A145	Q18845	OTR	EBBR	275	36000	443											

The basestation database contains the **registration** and the **type** of an aircraft.

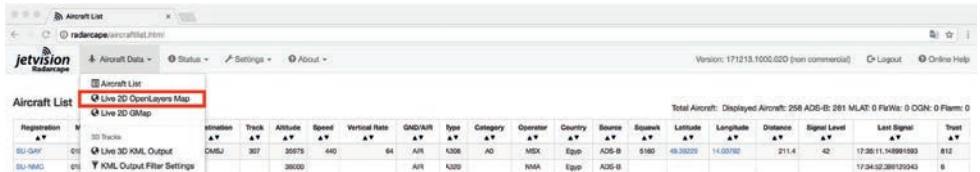
The flight routes database contains the **origin** and the **destination** of a flight.

It is necessary to update these databases because otherwise this information will not be shown on the **Aircraft Data** pages.

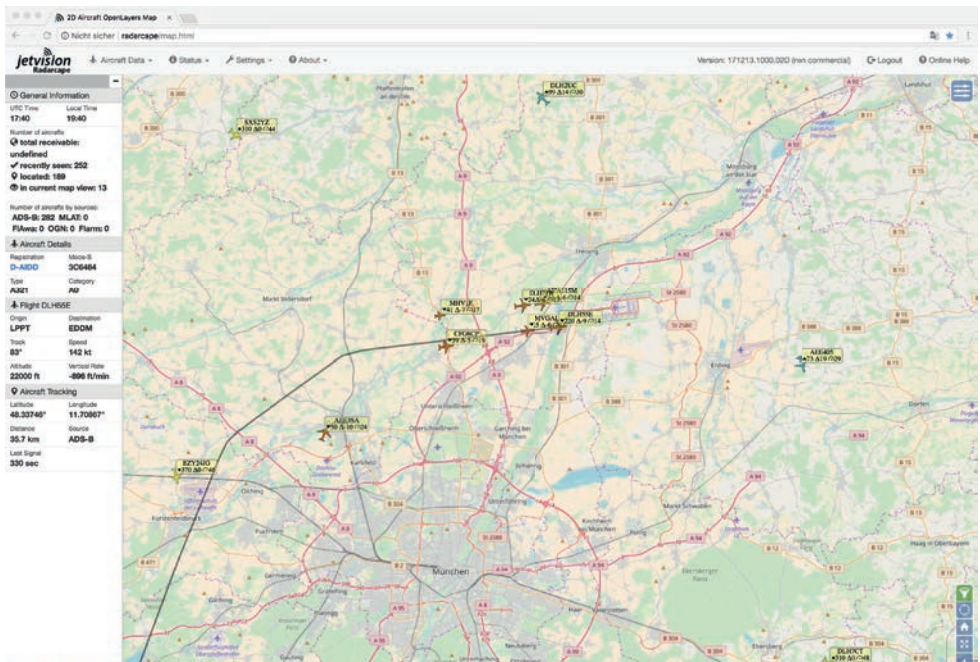
As we try to improve the Radarcape software continuously, the **latest software version** can be found here:

http://wiki.modesbeast.com/Radarcape:Installation_Guide

5. Go to [Aircraft Data > Live 2D Output](#) to see the received aircraft on a 2D map.



6. Enjoy your Radarcape!



Visit our **Wiki** for more details about the Radarcape system software:
<http://wiki.modesbeast.com/Radarcape:Contents>

Distribution

Günter Köllner Embedded Development GmbH
85256 Vierkirchen, Germany